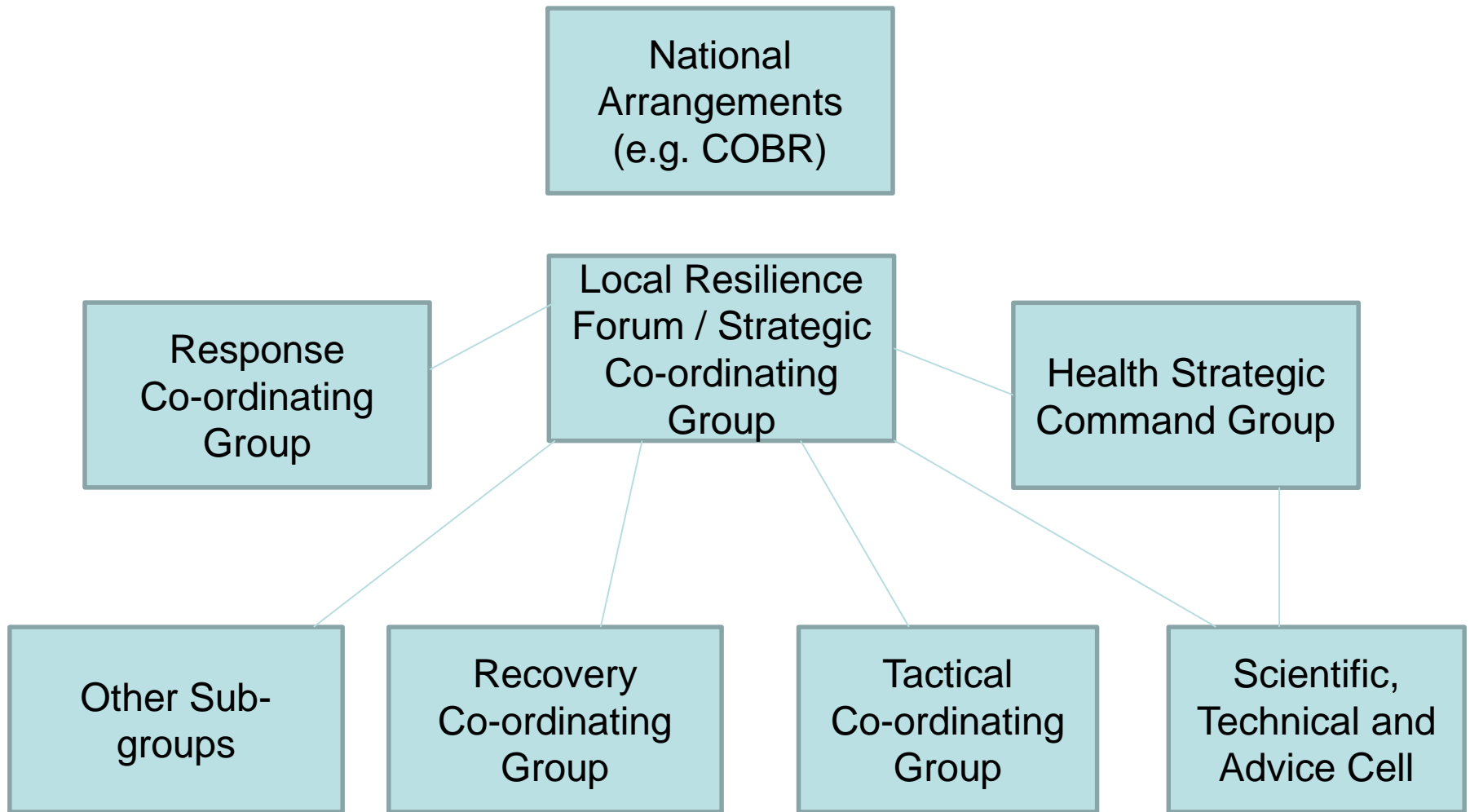


Coronavirus overview of Council plans and potential response

Context

- 31st Dec 2019 – China notified WHO of outbreak of pneumonia in Wuhan city
- Viral infection – similar to seasonal flu- Most at risk of severe illness are elderly and those with reduced immunity due to co-morbidity
- 30th Jan 2020 – WHO declared outbreak of COVID-19 a Public Health Emergency of International Concern (PHEIC)
- WHO monitoring global spread- not yet declared pandemic
- Data still emerging
- 3rd March 2020 – UK government published coronavirus action plan

Multi-Agency Co-ordination



National response

Aim is to minimise health and social care impact by slowing spread, reduce infection, illness and death

UK Government published action plan – 3rd Oct 2020; Phased approach to control and management.

Contain: Early detection; contact tracing; prevention of spread as long as reasonable (legal powers for quarantine, general aircraft & maritime declaration, guidelines to public, health staff and employers, travel guidelines, regular briefing & publications to public and professionals, capacity added to NHS 111)

Delay: Slow down spread

Research: understand virus and actions to lessen its effect e.g. vaccines, medications etc

Mitigation: Treatment and care for those who become ill

Latest figures

As at 4th March 2020

- 16659 tested of which 16574 were confirmed negative in the UK. **85 were positive.** This includes first confirmed case reported in Newcastle (managed under LRF response)

Regional/Local arrangements

- PHE leading on detection, contact tracing and provision of specialist advice
- Working closely with LRF as per NRR procedures
- DsPH provided daily communication about number of cases being tested, advice to schools
- Letters of advice to all schools sent out through DCSs with information on guidelines for educational settings. There is now a DfE hotline
- Guidelines for health professionals shared by CMO
- Links identified for all LAs in preparation of PPE equipment for social care staff
- PHE requested “mutual aid” from the public health and possibly public protection teams- we are seeking more detail on this and assessing our capacity.

Council structures in place

- **Emergency Management Response Team (EMRT)**

Would organise the Council's response to the community impacts, sits within a multi-agency structure overseen by the Local Resilience Forum

- **Business Continuity Team**

Would manage internal impacts of any pandemic on the Council's critical activities

- **Public Health and Public Protection Team**

The team have prepared "lines to take" to field any general enquiries from the public, staff and businesses and local organisations, and are aware they need to refer specific queries to Local PHE team as required.

EMRT plans

EMRT to lead on council response and planning for COVID-19

- NE Pandemic Framework
- MBC Major Incident Plan
- Community Risk Register
- Supporting plans to deal with incidents e.g. rest centre evacuation plan

Flu Pandemic Plan contents: Response for COVID-19

- How service prioritisation would be undertaken / decisions about service cessation and alternative ways of delivering services
- Overview of multi-agency co-ordination that would be put in place.
- Roles and responsibilities of key staff e.g. Director of Public Health, Communications, HR.
- Further changes that could be made to internal processes e.g. sickness procedures, job roles etc.
- PPE use (if required).
- Post incident recovery considerations.

Preparations/actions to date

- Public Health England (HPE) leading on surveillance, monitoring, contact tracing, screening and detection
- Director of Public Health provided with daily briefings by PHE; At at 3rd March 2020, 30 people have been tested in Middlesbrough and all negative. 4 schools have contacted PHE for advice.
- PHE Tees health protection team have fielded a number of queries and been very responsive.
- Adhoc advice to providers
- Review of the Councils Flu Pandemic plan and North East Multi-agency framework to reflect actions required for COVID-19
- Amendments to sickness recording system to enable immediate tracking of any impacts on staff
- Communications to staff ; public information placed on council intranet.
- LRF work to ensure dovetailing of the NE framework and national plans with local response
- Initial planning reference enabling access to PPE by third party providers if required.

Other internal Council plans

- Corporate Business Continuity Plan
- Generic plans for each 'critical activity'
- Fuel Disruption plan
- Relocation plan
- Flu Pandemic plan
- Disaster Recovery Plan